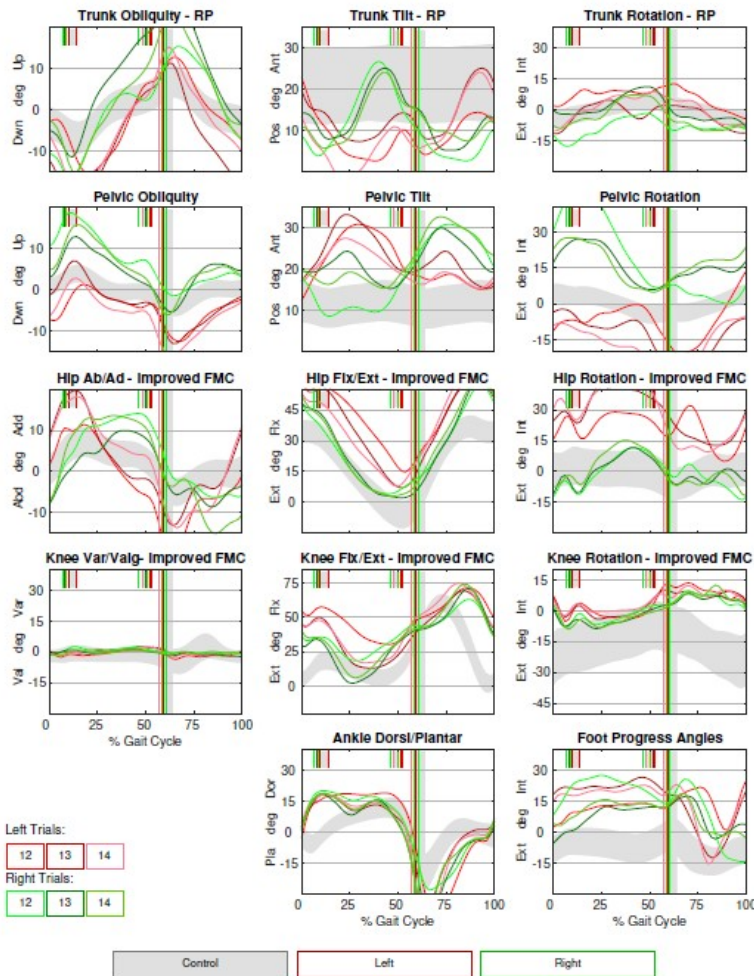


Interactive Platform: Microsoft Forms Bony Problems



Bony Deformity

	Motion		Selectivity, Strength	
	L	R	L	R
HIP				
Flexion	120	120	0, 4/5	0, 4/5
Extension				
Thomas Test	0	0		
Knee 0			0, 1/5	0, 2/5
Knee 90			0, 1/5	0, 2-/5
Abduction				
Hips Extended	32	33	0, 3-/5	0, 3-/5
Hips Flexed	70	70		
Adduction				
Ober Test	-	-		
Internal Rotation	80	65		
External Rotation	14	39		
Anteversión	58	20		
KNEE				
Extension	0	-5	0, 3-/5	0, 3-/5
Flexion				
Prone	155	155	0, 2/5	0, 3-/5
Supine	155	155		
Popliteal Angle				
Unilateral	60	60		
Bilateral	50	50		
HS Shift	10	10		
Extensor Lag	10	10		
Patella Alta	No	No		
TIBIA				
TF Angle	12	-5		
BM axis	9	7		
2nd Toe Test	20	10		
ANKLE				
Dorsiflexion				
Knee 90	5	5		
Knee 0	0	0		
Confusion Test	+	+		
Plantarflexion	55	60	0, 1/5	0, 1/5
Anterior Tibialis			0, 1/5	0, 1/5
Posterior Tibialis			0, 1/5	1, 3+/5
Peroneus Longus			0, 1/5	0, 1/5
Peroneus Brevis			0, 0/5	0, 0/5
Extensor Hallucis Longus			0, 1/5	0, 3/5
Flexor Hallucis Longus			0, 0/5	0, 0/5
POSTURE/TRUNK				
Abdominal Strength			1, 2/5	
Back Extensor Strength				
Anthropometric				
LEG LENGTH (cm)	62.5	62.0		
HEIGHT (cm)		122.6		
WEIGHT (kg)		21.8		
BMI		15		

Abbreviations:
ABD = abduction
MIL = mild
NEU = neutral
TYP = typical
VAL = valgus
VER = vertical

	Foot Position	
	L	R
FOOT NON-WEIGHTBEARING		
Subtalar Neutral	Yes	Yes
Hindfoot Position	VER	VER
Hindfoot Motion		
Eversion	TYP	TYP
Inversion	TYP	TYP
Arch		
Midfoot Motion	LOW	LOW
Forefoot Position 1	TYP	TYP
Forefoot Position 2	NEU	NEU
Bunion Def.	No	No
1st MTP DF	TYP	TYP

	Foot Position	
	L	R
FOOT WEIGHTBEARING		
Hindfoot Position	VAL/MIL	VAL/MIL
Midfoot Position	PLA	PLA
Forefoot Position 1	TYP	TYP
Forefoot Position 2	ABD/MIL	TYP

SPASTICITY (Ashworth Scale)		
Hip Flexors	1	1
Adductors	1	1
Hamstrings	1	1
Rectus Femoris	2	2
Plantarflexors	1	1
Posterior Tibialis	1	1
Ankle Clonus	-	-

Selectivity Grade Key	Ashworth Scale
0 - Only patterned movement observed	1 - No increase in tone
	2 - Slight increase in tone
1 - Partially isolated movement observed	3 - More marked increase in tone
2 - Completely isolated movement observed	4 - Considerable increase in tone
	5 - Affected part rigid

BEIGHTON SCORE: 0/8

STANDING POSTURE:

BALANCE:

COMMENTS:
TUG = 25.13 Sore on R medial malleolus from shoes, not braces. R hand dominant. November 2019 was last botox injections - routinely bilateral gastroc, hamstrings, and/or adductors. Initially Botox was every 6 mo and now 1 x year. Last injections of minimal benefit - pain may have been reduced, but no effect on walking. 0, 4/5 at full KE range bilaterally. Evidence of dystonia

